

# HELLFIRE

## *Painting*

# PAINTING URBAN BASES



Try breaking pieces of linoleum and gluing them on for a look of broken concrete. Linoleum is quite easy to work with and can be easily glued on with either hot glue or super glue. Two rules for making great bases: 1) to keep them interesting and simple. You want them to complement your model, not be the focus point. Also, try to remember that your model needs to stand on it, so don't get carried away with making angles and edges.



A few examples from Secret Weapons, Structures and Dragon Forge of new urban bases.



You can also combine these techniques with resin bases to make them unique and truly your own, as seen on the picture above.

## BASIC BASES VOLUME 2

# HELLFIRE

## *Painting*

Painting Urban Bases

Basic Bases Volume 2

By Max Dubois

Part 1: Crafting your base

Part 2: Painting your base

Part 3: Alternate Uses for these techniques.

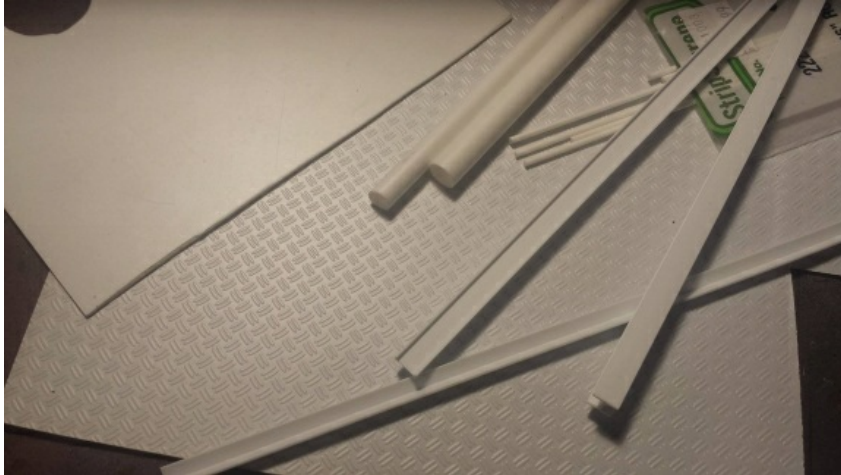


## Part 1: Crafting an urban looking Base

A man needs a base.

This tutorial is made using a resin base, but you can just as easily make your own using some of the tips and techniques provided below:

The easiest way to make urban bases is using styrene. Styrene comes in different thickness and can be easily cut with a modelling knife to fit the shape of the base and to simulate concrete slabs or pavement. You can also get textured kind for more variety.



Another great way is to use leftover parts from terrain/building kits and use them on bases. If you are building a diorama, army presentation tray or a display, using the same materials will add a lot of realism and consistency to your display.



Try breaking pieces of linoleum and gluing them on for a look of broken concrete. Linoleum is quite easy to work with and can be easily glued on with either hot glue or super glue.

Two rules for making great bases is to keep them interesting and simple. You want them to complement your model, not be the focus point. Also, try to remember that your model needs to stand on it, so don't get carried away with insane angles and edges.



A few examples from Secret Weapons Miniatures and Dragon Forge of nice urban bases.



You can also combine these techniques with resin bases to make them unique and truly your own, as seen on the picture above.

Here's the finished look on a Grey Knight army for Games Workshop's Warhammer 40,000. Notice how the bases match with the



display board to tie everything together.

Part 2

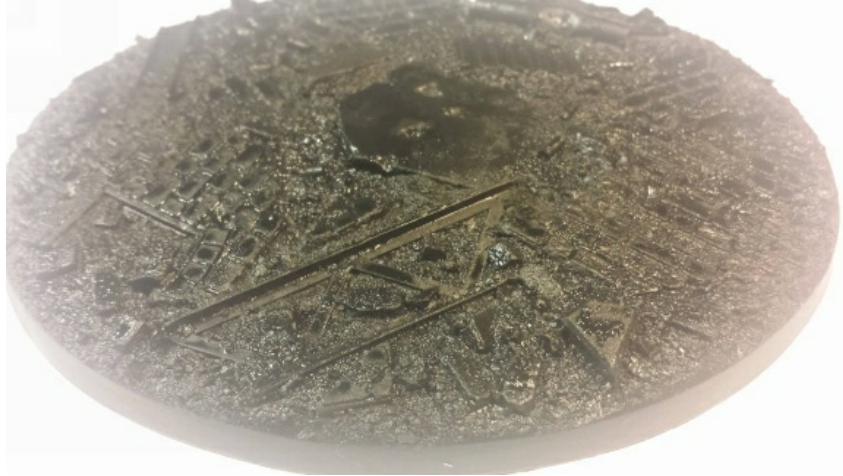


*I list the colors provided by The Army Painter because those are the ones used throughout the book, but feel free to use whatever brand you have on hand. A dark grey is a dark grey, regardless of the fancy name on the pot.*

The pictures only show a single base, but if you plan on doing an army, you really should do all of them together. It saves an insane amount of time and you get a much more consistent look.

#### Step 1

Undercoat the base black. If you're using a spray can, be sure to cover all the details, cracks and crevices. Remember that 2 light coats are better than a heavy one.



## Step 2



Using Uniform Grey, dust on your bases. The idea here is to go really lightly with whatever method you are using to get some grey on the higher points of the base while leaving plenty of black to show through. If you are familiar with dual priming, this is pretty much what we are doing, with grey instead of white.

You can airbrush or drybrush your Uniform Grey to get a similar effect. A shaker can is quicker if you're doing large quantities of bases (say, a whole army) and your stuff is already lined up from priming them black.

Less is more in this case. With the later steps it will be easy for you to go lighter if you think your bases are too dark, whereas it's hard to add black in them without messing up the effect.

*Steps 3 to 5 require no skill whatsoever.*

*A blind monkey could get this done for you.*

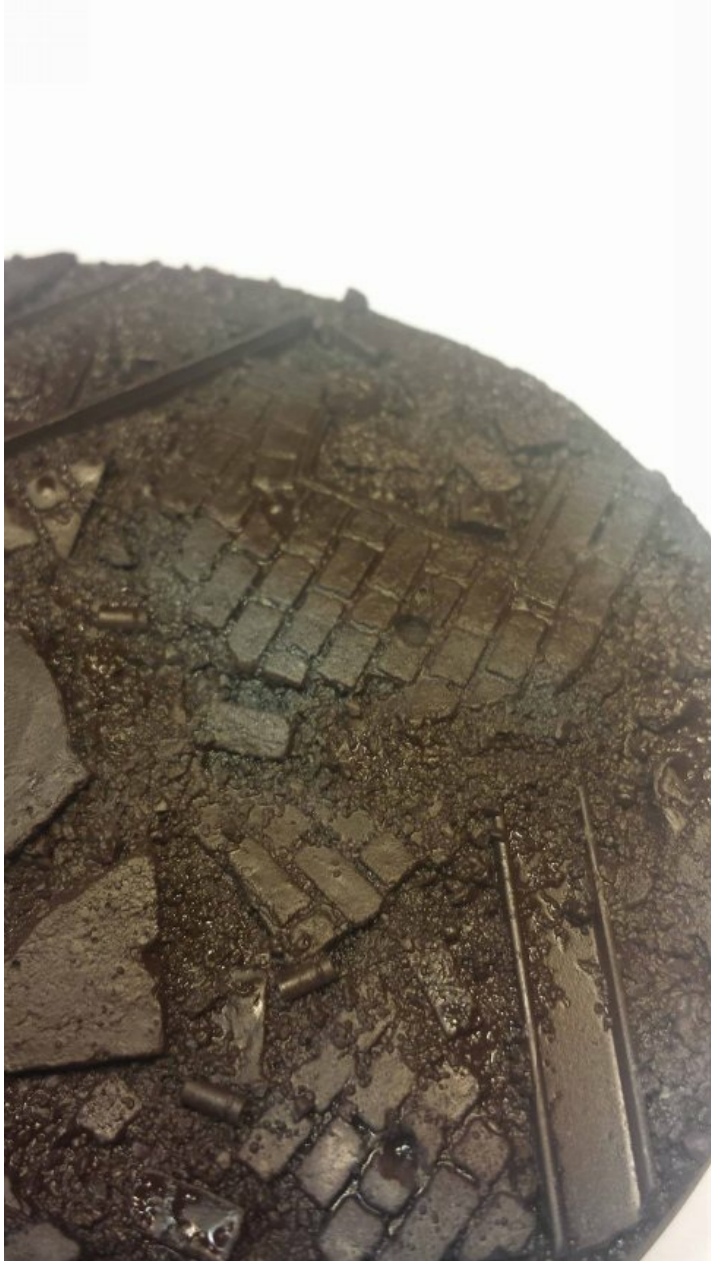
*Make no effort to blend colors together, the goal is to get this done quickly, much of this will be covered by more paint later. You can use either a regular brush or an airbrush for this. The result is honestly the same, only you save time by using the airbrush because you don't have to wait for the watered-down paints to dry.*

*If you are not using an airbrush, you only have to use a mix of equal part paint to equal part water for the following steps.*

Step 3

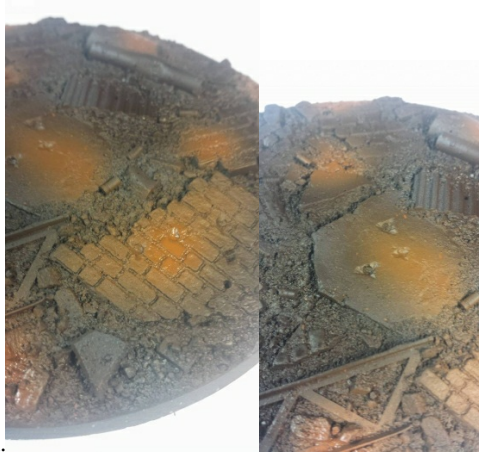


Get your artistic juices flowing; this is the happy accident step. We'll start with Oak Brown, and airbrush this in random patches, but aiming for deep parts of the models. You can cover anywhere from 5% to 50% of your base with this step.



Step 4

This is pretty much like step 3, but with Fur Brown. This time, go a little less trigger-happy; you want both your primer and your darker



brown showing on the model.

#### Step 5



You need to make sure the paint you laid on in the previous steps is dry before starting the next steps. If you're working on multiple bases, it shouldn't be too long as by the time you're done with the last one, the first one you did will have dried up.

Using your trusty beaten down 1" brush (GW or Army Painter's Large Drybrush is my weapon of choice here) drybrush you entire models with Ash Grey like there's no tomorrow. You can see the process of this step in the picture below.

Although this step is quite straightforward, it is quite time consuming as you want to wipe the paint clean your brush enough so you don't over do it. Multiple lights coats are better than one too heavy, as drybrushing with too much paint will pretty much the effect. But this step's drybrush should go over pretty much the whole base, don't hold back.



#### Step 6

With a lighter grey or white, drybrush over certain areas to give them a more striking look. This is where you get to fix your bases if certain areas are too dark or if you want to bring a specific point in focus. Don't go over the entire base, only specific areas.



#### Step 7

Paint whatever details are on the models you're doing. Skulls, ammo casing, grass, lights, whatever, the way you want. If you are doing bases for an army or a display board, you can do one basecoat and one wash on these. It's simple enough, and the wash will tone down the detail so it doesn't stick out too much.



As stated previously, the base should not be the focus point of the model; it should only enhance it, as you don't want a bright skull popping out from your rather dark base.

### Step 8

Paint the edge of your bases black. This may not look like much, but it's all the difference in the world and gives your bases a crisp and polished look.



#### Quick note on touch ups:

Because the techniques used for these bases are all aimed at getting a great result in no time, mistakes are bound to happen.

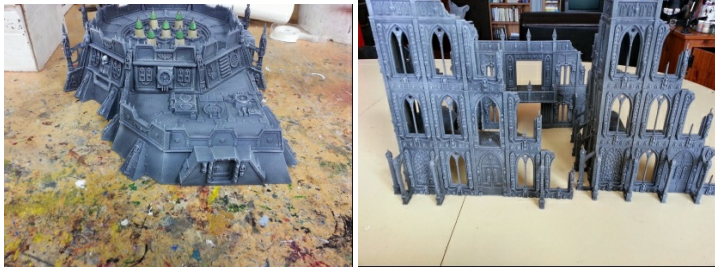
The good thing about it is that it's quite easy to touch up. Simply go back to step 3 on the area you need to touch up and work your way through the steps. No need to start the whole base, simply focus on the part that need fixing.

### Part 3

#### Alternative uses and variations

##### 1- Simplify.

Not everything needs this amount of details. These buildings for example were Primed in black, then grey (Step 1 and 2 ) and then drybrushed with light grey and white (Step6, 7 and 8 ) for a clean and simple look that takes no time.



##### 2- Rocks

You can also use this method when you are painting rocks to give them a more interesting texture that straight black-grey-white transition.



3- With a twist.

Step 4b is you will, but this time using a dark purple, dark green or turquoise. By splashing these colors in some of the deeper parts of your model, you can create an interesting contrast on your bases.



#### 4- Bricks

Another use for step 4b is ideal if you have exposed bricks on your bases. Pick a brown/red color – my favourite is Doombull Brown from Games Workshop and paint your bricks at this stage. By doing them this early, the later steps in the painting process will give them a classic dry and dusty look.



Be sure to check out other volumes in this collection:

Volume 1: Painting Rocky Bases